

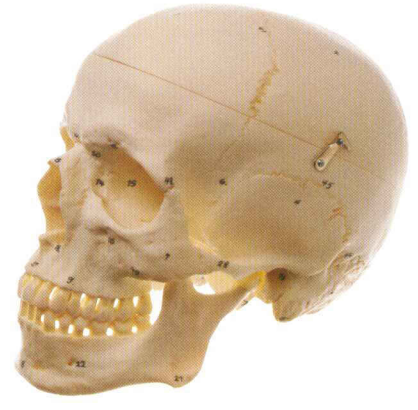
**QS 7/T ·
ARTIFICIAL TRANSPARENT
HUMAN SKULL**

Natural cast, in SOMSO-Plast. Removable vault, lower jaw movable. Life-like reproduction of the bony structure. Separates into 3 parts. Weight: 800 g



**QS 7/E · ARTIFICIAL
HUMAN SKULL**

Natural cast, in SOMSO-Plast. Removable vault, lower jaw movable. Separates into 3 parts. Length: 17.5 cm., width: 14.1 cm., size 51.2 cm., weight: 800 g



**QS 7/1 ·
ARTIFICIAL HUMAN SKULL**

Natural cast, in SOMSO-Plast. As QS 7, but with notation and explanation in English and Latin. Separates into 3 parts. Weight: 800 g



QS 7 · ARTIFICIAL HUMAN SKULL

Natural cast, in SOMSO-Plast. Removable vault, lower jaw movable. Life-like reproduction of the bony skull. Separates into 3 parts. Length: 17.5 cm., width: 14,1 cm., size: 51.2 cm., weight: 800 g



*Illustration of the skullbase from below.
The structure of the bones is identical to the models
QS 2, QS 2/1, QS 7 and QS 7/1*

QS 7/2 · ARTIFICIAL BASE OF THE SKULL

Natural cast, in SOMSO-Plast. Designed for medical students' studies. In one piece. Length: 17.5 cm., width: 14.1 cm., size: 51.2 cm., weight: 530 g